

**MODEL CL1610-DY**

100 - 240 Volt , 50 / 60 Hz , 1 Phase  
DC INVERTER OUTPUT, 3 Phase

● **Rated Performances**

Item \ Rev(min <sup>-1</sup> 5)	1200	1500	1900	3000	4300	4800
Capacity (W) @10%	66	83	106	177	147Min	235
COP @10%	1.53	1.61	1.58	1.58	-	1.40

● **Rating Condition**

Revolution (min <sup>-1</sup> 5)	1200~4800	
Evaporating Temperature	-23.3 °C	(-10°F)
Condensing Temperature	54.4 °C	(130°F)
Ambient Temperature	32.2 °C	(90°F)
Return Gas Temperature	32.2 °C	(90°F)
Liquid Temperature	32.2 °C	(90°F)

● **Application**

Low Back Pressure (LBP)

Evaporating range	-30 ~ -5 °C
Refrigerant	HC-600a
Expansion	Capillary tube
Compressor Cooling	Fan cooling
Refrigerant charge limit	100 g (maximum)



● **Compressor and Motor Data**

Compression Type	Reciprocating scotch yoke
Bore , Stroke	27 mm , 18 mm
Displacement	10.3 ml / rev.
Oil Type	S10M
Oil charge	260 ml
Motor Type	3 Phase Full Wave Drive
Voltage Range	100-240 V -15%~+10% -50 / 60Hz
Winding Resistance at 75°C ( 20°C )	
U , V , W Coil	13.0 Ohm (10.6 Ohm)
Weight with Oil	6.5 Kg

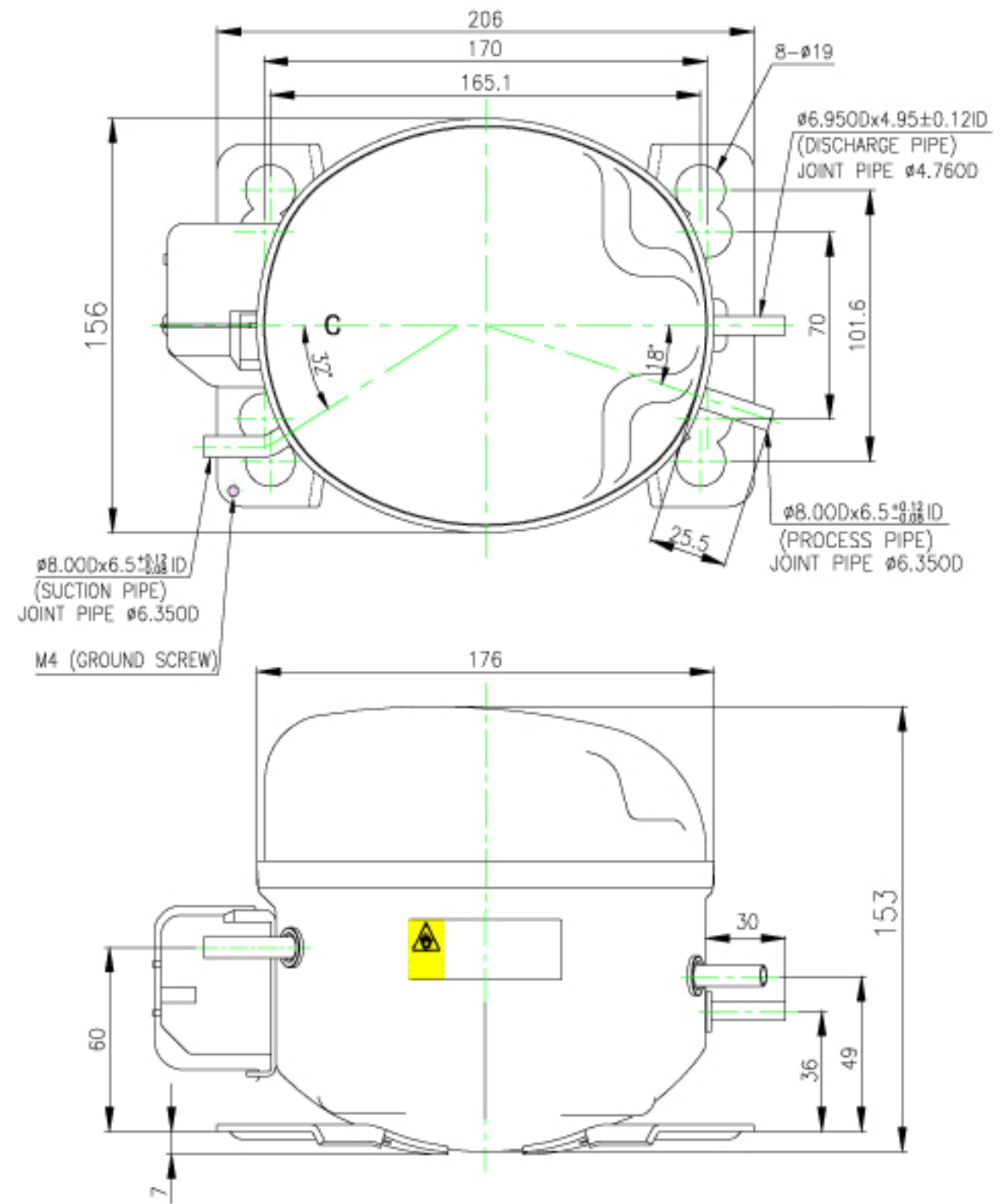
● **Electrical Components**

Inverter Circuit Board ( PAM )	
OHR	RRKF1973
H-COVER-D1	1TRRT0268-A

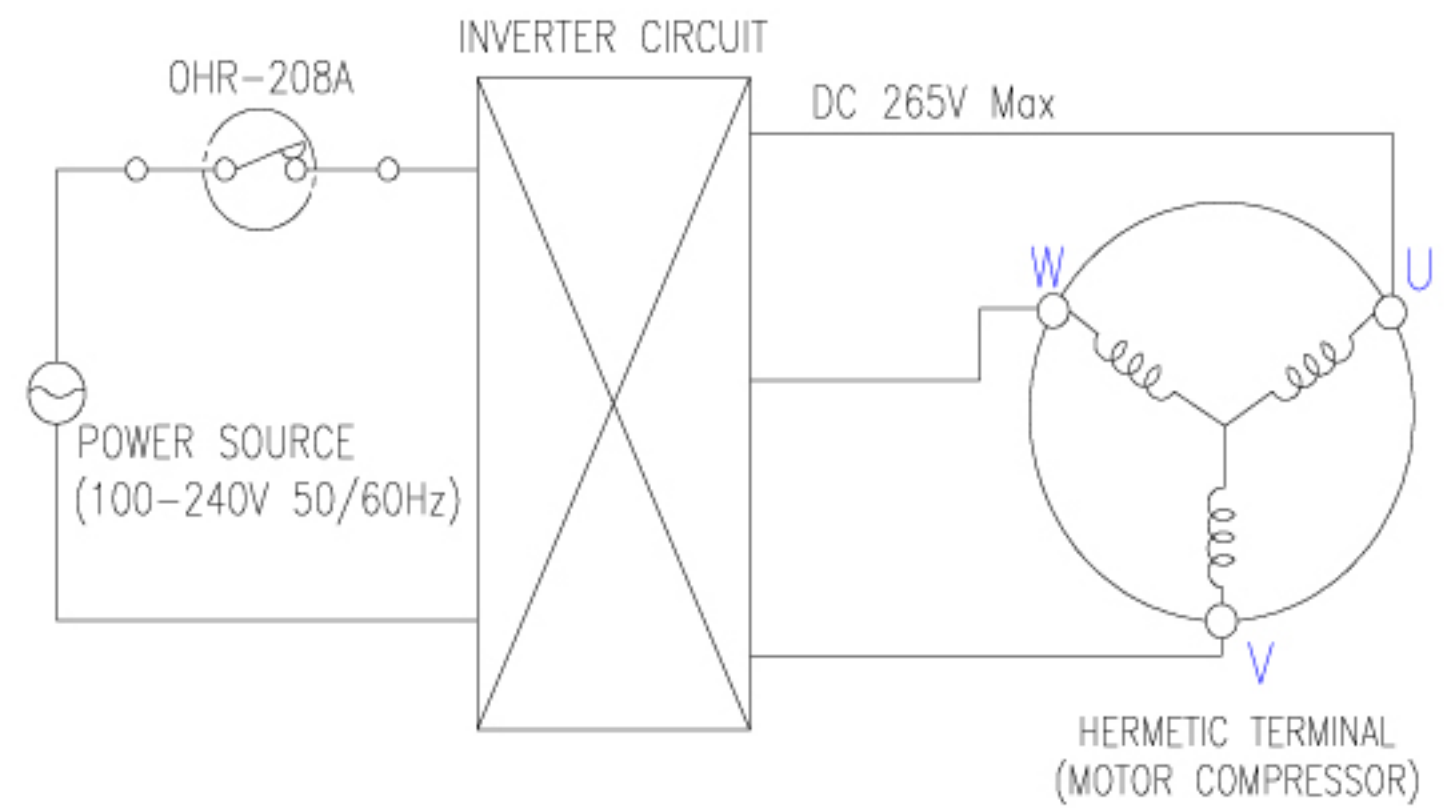
● **Mountings**

R-Grommet	3TMGT1701-A
Pipe	3CYCT1930-A
Washer	3ZMCT0331-A

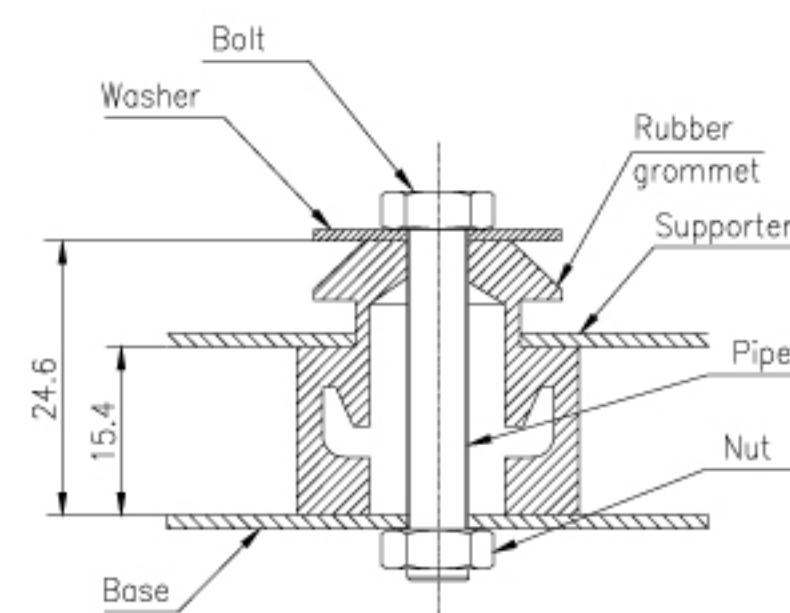
**INVERTER**



Dimension (mm)



Wiring Diagram



Mountings

\* Minimum order 1 pallet (100 pcs)